

**Drain:** CROSSFIELDS DRAIN      **Drain #:** 230  
**Improvement/Arm:** CROSSFIELDS DRAIN-SECTION 1  
**Operator:** JDH      **Date:** 12-9-03  
**Drain Classification:** Urban/Rural      **Year Installed:** 1988

### GIS Drain Input Checklist

- Pull Source Documents for Scanning JJA 12-9
- Digitize & Attribute Tile Drains N/A
- Digitize & Attribute Storm Drains JJA 12-10
- Digitize & Attribute SSD JJA 12-10
- Digitize & Attribute Open Ditch N/A
- Stamp Plans JJA 12-10
- Sum drain lengths & Validate JJA 12-10
- Enter Improvements into Posse JJA 12-10
- Enter Drain Age into Posse JJA 12-23
- Sum drain length for Watershed in Posse JJA 12-23
- Check Database entries for errors JJA 12-10

**Gasb 34 Footages for Historical Cost  
Drain Length Log**

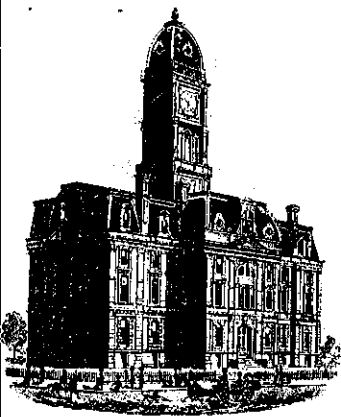
Drain-Improvement: CROSSFIELDS DRAIN - CROSSFIELDS - SECTION 1

Drain Type:	Size:	Length <small>Survey</small> (Range)	Length (DB Query)	Length Reconcile	If Applicable:	
					Price:	Cost:
SSD	6"	9500	14112	+4612'		
RCP	12"	940'	875'	-65'		
	15"	1288'	1288'	Ø		
	18"	3091'	3395'	+304'		
	21"	1000'	1000	Ø		
	24"	5566'	5566	Ø		
	27"	1372'	1372'	Ø		
	33"	313'	313'	Ø		
	36"	225'	225'	Ø		
	42"	326'	326'	Ø		

Sum: 23621'    25472'    +1851'

Final Report: \_\_\_\_\_

Comments:  
SURVEY REPORT HAS INCORRECT LENGTHS FOR 6" SSD, 12" AND 18" PIPE.  
 \_\_\_\_\_  
 \_\_\_\_\_  
 \_\_\_\_\_  
 \_\_\_\_\_



SURVEYOR'S OFFICE

# Hamilton County

Kenton C. Ward, Surveyor

779-6110 Ext. 19  
776-9626

Noblesville, Ind. 46060 April 10, 1988

TO: Hamilton County Drainage Board

RE: Crossfield Drain, Section 1

Attached is a petition, mon-enforcement request, plans, calculations, estimate and assessment roll for Crossfield Drain, Section 1.

I have reviewed the submittals and petition and have found each to be in proper form.

I have made a personal inspection of the land described in the petition. Upon doing so, I believe that the drain is practicable; will improve the public health; benefit a public highway and be of public utility; and that the costs, damages and expenses of the proposed drain will probably be less than the benefits accruing to the owners of land likely to be benefitted. The drain will consist of the following:

6"	SSD	9500 L.F.	24"	RCP	5479 L.F.
12"	RCP	953 L.F.	27"	RCP	1372 L.F.
15"	RCP	1288 L.F.	33"	RCP	313 L.F.
18"	RCP	3217 L.F.	36"	RCP	225 L.F.
21"	RCP	1063 L.F.	42"	RCP	326 L.F.

The total length of the drain will be 23,736 feet.

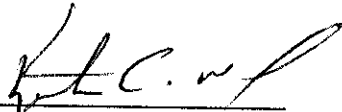
Although the 24" offsite storm sewer will be included as part of the regulated drain, the properties it will be installed on will not be assessed because the line will not benefit the property. This line is only to provide an outlet for the retention lake.

I have reviewed the plans and believe the drain will benefit each lot equally. Therefore, I recommend each lot be assessed equally. I recommend ~~maintenance~~ assessment of \$35.00 per lot and \$3.00 per acre for roadways. With is assessment the total annual assessment for the drain/this section will be \$1853.89.

The responsibility for lake maintenance shall be the Home Owners Association. The regulated drain shall begin and end at the lake outlets and inlets.

I recommend a hearing be set for July 1988.

KCW/no

  
\_\_\_\_\_  
Kenton C. Ward  
Hamilton County Surveyor

BEFORE THE HAMILTON COUNTY

DRAINAGE BOARD IN THE

MATTER OF THE Crossfields DRAIN

NOTICE

TO WHOM IT MAY CONCERN AND

---



---



---



---



---

Notice is hereby given of the Hearing of the Hamilton County Drainage Board on the Crossfields Drain, on July 11, 1988, at 9:15 A.M. in the Commissioner's Court, 3rd floor, in the Hamilton County Courthouse Noblesville, Indiana and which the Maintenance Report of the Surveyor and the Schedule of Assessments made by the Drainage Board have been filed and are available for public inspection in the office of the Hamilton County Surveyor.

HAMILTON COUNTY DRAINAGE BOARD

ATTEST:

*Nancy Ellen Oldham*  
 Nancy Ellen Oldham-Secretary

ONE TIME ONLY

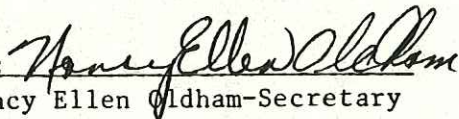
BEFORE THE HAMILTON  
COUNTY DRAINAGE BOARD  
IN THE MATTER OF THE  
Crossfields DRAIN

NOTICE

Notice is hereby given pursuant to Section 405 of the 1965 Indiana Drainage Code that this Board, prior to final adjournment has issued an order adopting the Schedule of Assessments, filed the same and made public announcement thereof at the hearing and ordered publication. If judicial review of the findings and order of the Board is not requested pursuant to Article Eight of this Code within twenty (20) days from the date of this publication, the order shall become conclusive.

HAMILTON COUNTY DRAINAGE BOARD

ATTEST:

  
Nancy Ellen Oldham-Secretary

One Time Only

*Crossfields*

**MERCHANTS NATIONAL BANK & TRUST COMPANY**

TELEX 27-411  
TELEPHONE (317) 267-7751

A MERCHANTS NATIONAL COMPANY  
WORLD BANKING DEPARTMENT  
One Merchants Plaza, Suite 770 South  
Indianapolis, Indiana 46255

S.W.I.F.T. ADDRESS — MNBIUS34  
CABLE ADDRESS — FRENZEL

**STANDBY LETTER OF CREDIT AMENDMENT**

Irrevocable Letter of Credit No.: 43162  
Issue Date: March 18, 1988  
Amendment No.: 1

Date: December 1, 1988

**BENEFICIARY**  
CITY OF CARMEL AND HAMILTON COUNTY  
COMMISSIONERS

**FOR ACCOUNT OF**  
ROBERT N. SKINNER AND AVIS H. SKINNER  
8900 Keystone Crossing, Suite 657  
Indianapolis, IN 46240

**AMOUNT:** USD73,000.00 (Seventy-Three Thousand and 00/100 U.S. Dollars).

*EXTERIOR DRAINAGE*

In accordance with instructions received, the above mentioned Letter of Credit has been amended as follows:

1. Extend expiration date to February 28, 1989.

**ALL OTHER TERMS AND CONDITIONS REMAIN UNCHANGED**

Merchants National Bank & Trust Co.  
of Indianapolis

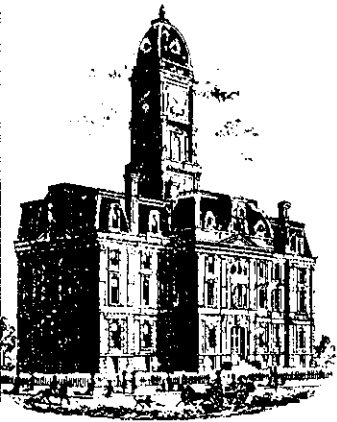
*Vicki Chaloup*  
Letter of Credit Specialist II

**FILED**

DEC 21 1988

HAMILTON COUNTY DRAINAGE BOARD

SECRETARY



Kenton C. Ward, Surveyor

Phone (317) 776-8495

Fax (317) 776-9628

Suite 188

One Hamilton County Square

Noblesville, Indiana 46060-2230

### Map Correction-Field Verification

Drain Number: # 230

Drain Length: OFFSITE = 2570

Drain Name: Crossfields Drain

Change +/-: No Change

Date: 07-28-03

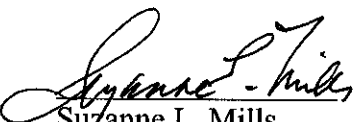
New Length: No Change

Verified By: Suzanne Mills ; Steve Britz

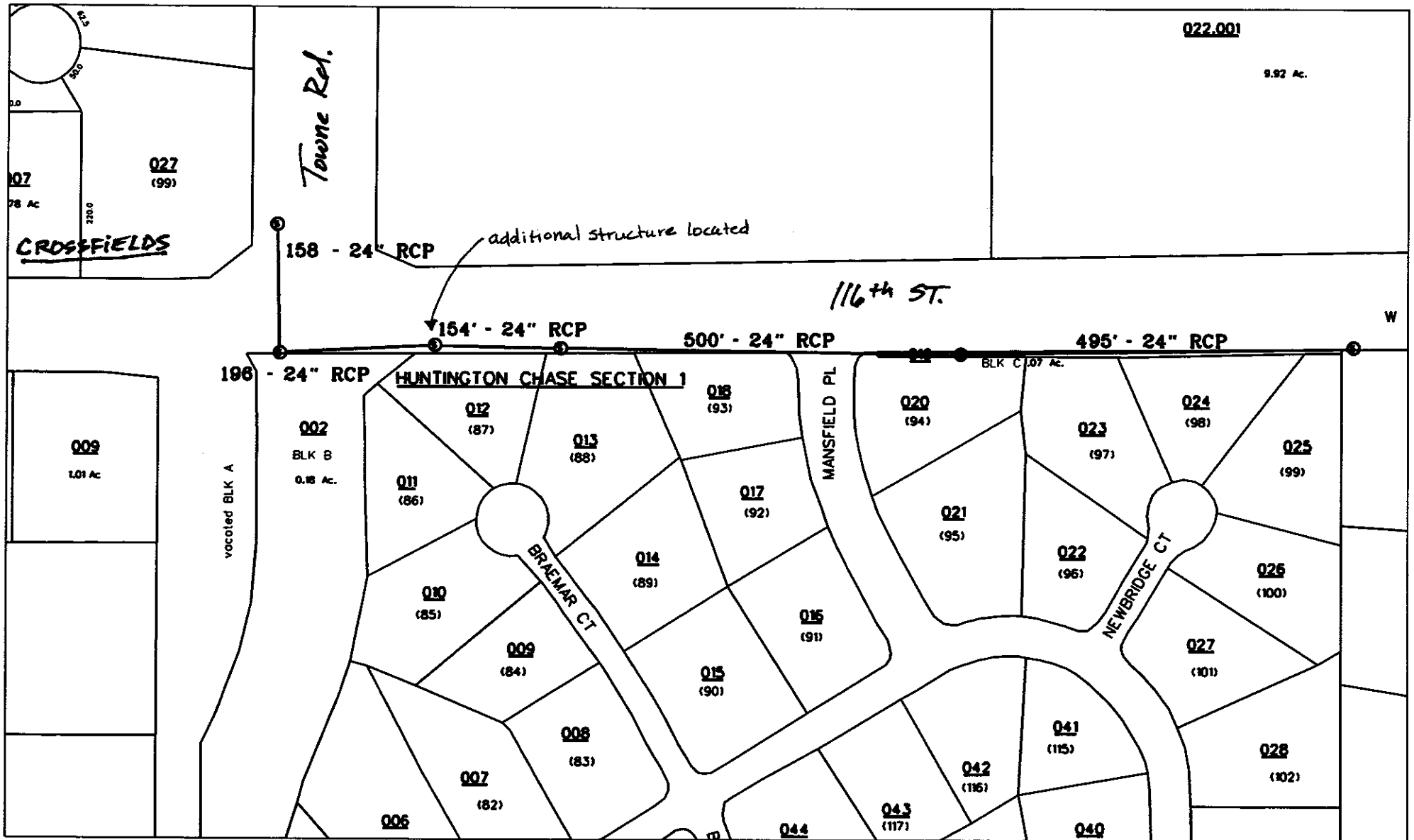
---

Notes & Sketch: See attached sketch.

The OFFSITE was field checked due to the intersection improvements at 116<sup>th</sup> ST and Towne Rd. The drain was not affected. However, an additional structure was located that was not shown on the original as built by Weihe Engineers (Job No 87-208). Therefore, there was no additional footage to be added to the drains length and all maps were corrected accordingly.

  
 Suzanne L. Mills  
 GIS Specialist





reg\_drain\_hc.dgn 7/28/2003 3:04:50 PM



SURVEYOR'S OFFICE

# Hamilton County

*Kenton C. Ward, Surveyor*

*Phone (317) 776-8495*

*Fax (317) 776-9628*

*Suite 146*

*One Hamilton County Square*

*Noblesville, Indiana 46060-2230*

October 11, 1996

To: Hamilton County Drainage Board

Re: **Crossfields Drain - section 1**

Attached are as-builts, certificate of completion & compliance, and other information for Crossfields section 1. An inspection of the drainage facilities for this section has been made and the facilities were found to be complete and acceptable.

During construction, changes were made to the drain which will alter the plans submitted with my report for this drain dated April 10, 1988. The changes are as follows:

- ✓ Str 38-39 consists of 21" RCP which was shortened from 426 feet to 400 feet.
- ✓ Str 47-49 consists of 21" RCP which was reported at 63 feet in length. The correct length is 26 feet.
- ✓ Str 28-27 consists of 24" RCP which was lengthened from 23 feet to 24 feet.  
The 24" RCP offsite line was lengthened from 2380 feet to 2412 feet.  
The 24" RCP outflow line was lengthened from 1837 feet to 1891 feet.  
The corrected total of 18" RCP is 3091 feet.
- ✓ Existing Manhole - str 15 consists of 12" RCP which was lengthened from 39 feet to 40 feet.
- ✓ Str 34-35 consists of 12" RCP which was lengthened from 51 feet to 55 feet.
- ✓ Str 58-20 consists of 12" RCP which was lengthened from 271 feet to 293 feet.
- ✓ Str 20-22 consists of 12" RCP which was shortened from 95 feet to 55 feet.

The length of the drain due to the changes described above is now **23,624** feet.

**Note:** the normal pool elevation of the retention pond was altered by 3 feet. This change was due to a request by the developer and reported verbally to the board on January 16, 1990 and reflected in the minutes in book 2 page 407. The calculations were those provided by Weihe Engineers included with their letter

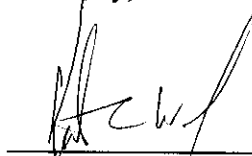
dated September 15, 1989. Based on their calculations this would make the normal pool elevation of the pond 884.68.

The non-enforcement was approved by the Board at its meeting on March 14, 1994.

The bond or letter of credit from Merchants National Bank & Trust Co, number 43162 for Offsite drainage, dated December 1, 1988, in the amount of \$73,000, has been recommended for release in a letter to the Commissioners dated March 23, 1989. The bond or letter of credit from Merchants National Bank & Trust Co, number 43161 for interior drainage, dated December 1, 1988, in the amount of \$85,490, has expired.

I recommend the Board approve the drains construction as complete and acceptable.

Sincerely,

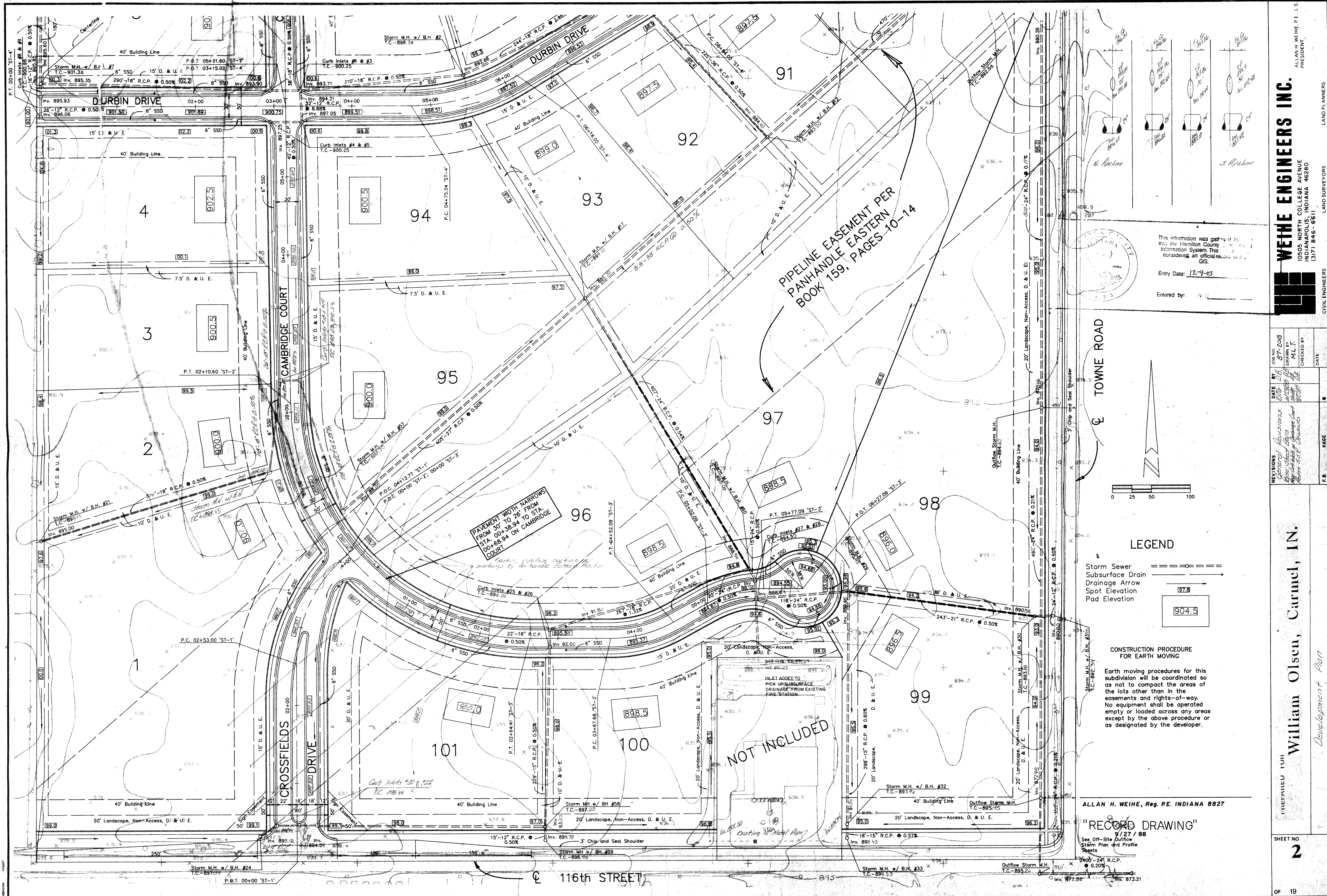


---

Kenton C. Ward,  
Hamilton County Surveyor

KCW/slm

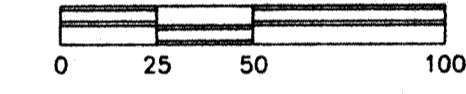




This information was gathered from the Hamilton County GIS and Information System. This is considered an official record of the GIS.

Entry Date: 12-9-03

Entered by: [Signature]



**LEGEND**

- Storm Sewer
- Subsurface Drain
- Drainage Arrow
- Spot Elevation
- Pad Elevation

**CONSTRUCTION PROCEDURE FOR EARTH MOVING**

Earth moving procedures for this subdivision will be coordinated so as not to compact the areas of the lots other than in the easements and rights-of-way. No equipment shall be operated empty or loaded across any areas except by the above procedure or as designated by the developer.

ALLAN H. WEIHE, Reg. P.E. INDIANA 8827

**"RECORD DRAWING"**  
9/27/88  
See Off-Site Outflow Storm Plan and Profile Sheets

PIPELINE EASEMENT PER PANHANDLE EASTERN BOOK 159, PAGES 10-14

PAVEMENT WIDTH NARROWS FROM 30' TO 26' FROM STA. 00+38.94 TO STA. 00+68.94 ON CAMBRIDGE COURT

NOT INCLUDED

WEIHE ENGINEERS INC.

10505 NORTH COLLEGE AVENUE  
INDIANAPOLIS, INDIANA 46280  
(317) 846-6611

LAND SURVEYORS  
CIVIL ENGINEERS

ALLAN H. WEIHE, P.E., L.S.  
PRESIDENT

DATE BY: 08/14/08 87-208

GENERAL REVISIONS: 01/15/08 D.B. 87-208

03/15/08 M.L.T. 87-208

04/15/08 M.L.T. 87-208

05/15/08 M.L.T. 87-208

06/15/08 M.L.T. 87-208

07/15/08 M.L.T. 87-208

08/15/08 M.L.T. 87-208

DRAWN BY: M.L.T.

CHECKED BY: M.L.T.

DATE: [ ]

PAGE: [ ]

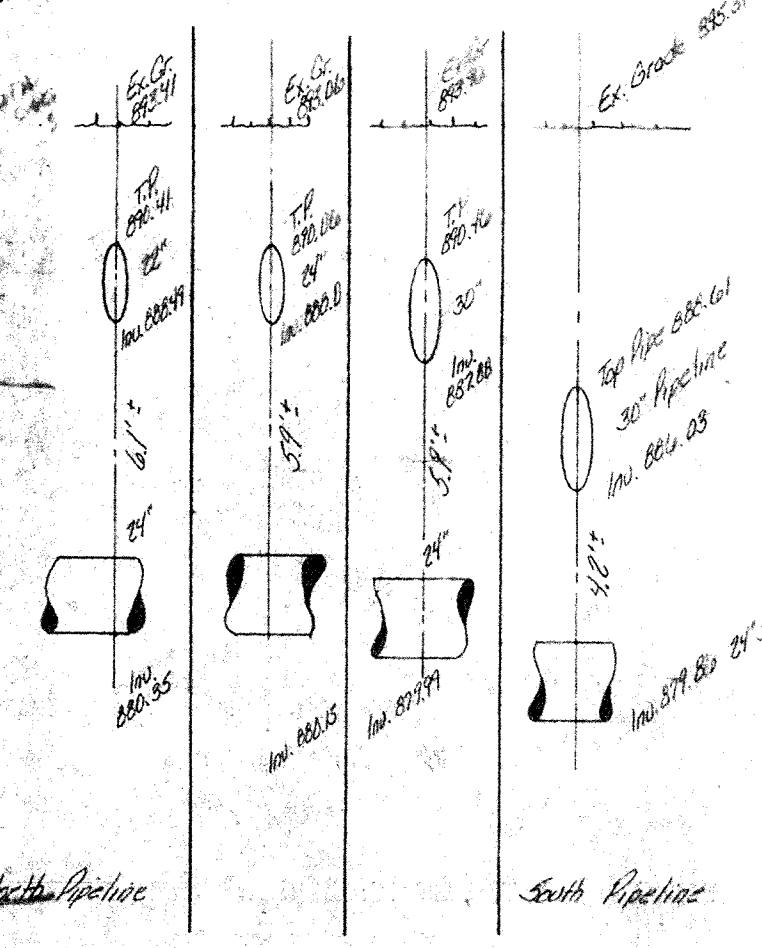
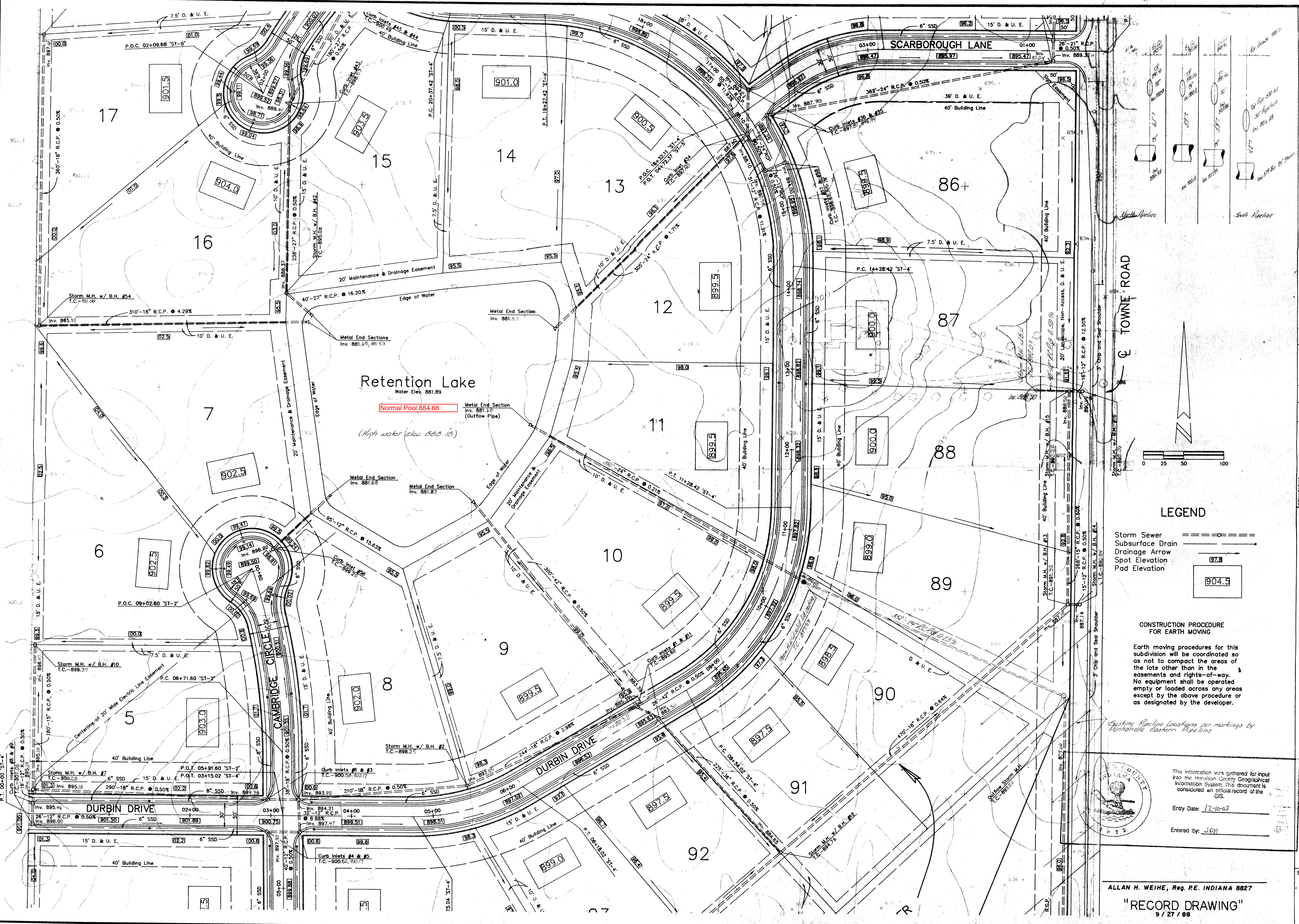
SHEET NO: 2

PREPARED FOR: William Olsen, Carmel, IN.

Development Plan

OF 19



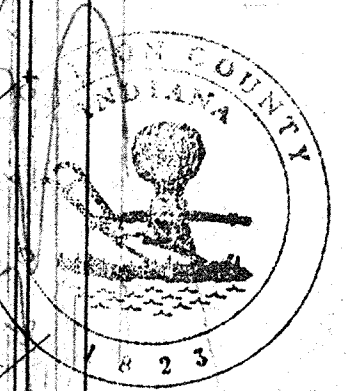


**LEGEND**

- Storm Sewer
- Subsurface Drain
- Drainage Arrow
- Spot Elevation
- Pad Elevation

**CONSTRUCTION PROCEDURE FOR EARTH MOVING**

Earth moving procedures for this subdivision will be coordinated so as not to compact the areas of the lots other than in the easements and rights-of-way. No equipment shall be operated empty or loaded across any areas except by the above procedure or as designated by the developer.



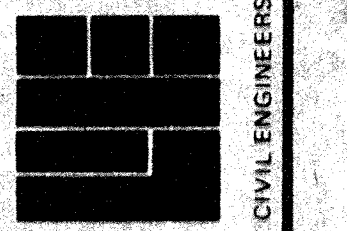
This information was gathered for input into the Hamilton County Geographical Information System. This document is considered an official record of the GIS.

Entry Date: 12-10-03

Entered by: J.O.H.

**WEIHE ENGINEERS INC.**  
 10505 NORTH COLLEGE AVENUE  
 INDIANAPOLIS, INDIANA 46280  
 (317) 846-6611

CIVIL ENGINEERS  
 LAND SURVEYORS  
 LAND PLANNERS



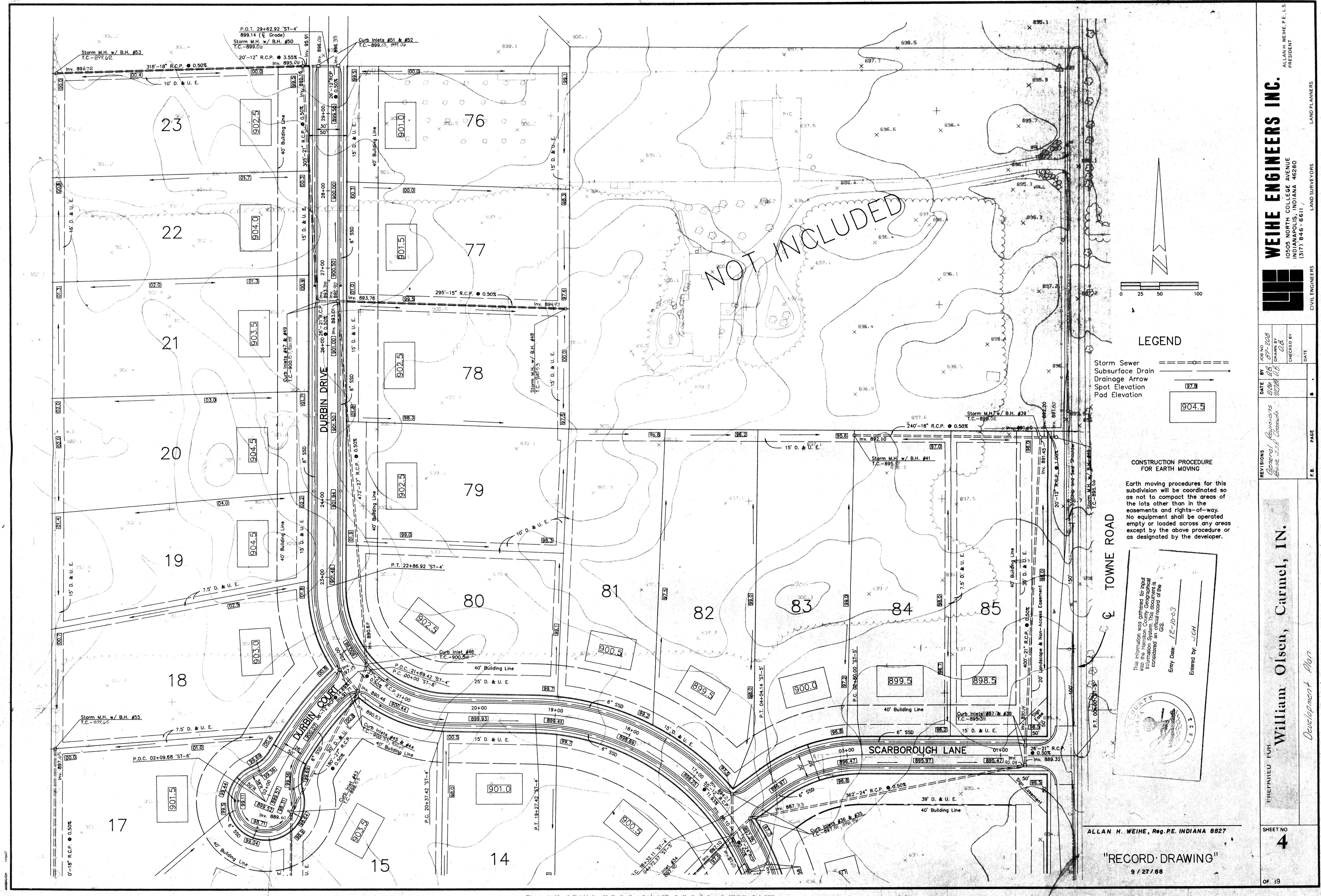
REVISIONS	DATE	BY	JOB NO.	CHECKED BY	DATE
General Revisions	12-10-03	J.O.H.	103-000000	J.O.H.	
As Shown	12-10-03	J.O.H.		J.O.H.	
As Shown	12-10-03	J.O.H.		J.O.H.	

**William Olsen, Carmel, IN.**  
*Development Plan*

SHEET NO. **3**

ALLAN H. WEIHE, Reg. P.E. INDIANA 827  
 "RECORD DRAWING"  
 9/27/88





**LEGEND**

- Storm Sewer
- Subsurface Drain
- Drainage Arrow
- Spot Elevation
- Pad Elevation

**CONSTRUCTION PROCEDURE FOR EARTH MOVING**

Earth moving procedures for this subdivision will be coordinated so as not to compact the areas of the lots other than in the easements and rights-of-way. No equipment shall be operated empty or loaded across any areas except by the above procedure or as designated by the developer.

This information was gathered for input into the Hamilton County Geographical Information System. This information is considered an official record of the GIS.

Entry Date: 12-10-03  
Entered by: JCH

ALLAN H. WEIHE, Reg. P.E. INDIANA 8827

"RECORD DRAWING"  
9 / 27 / 88

**WEIHE ENGINEERS INC.**  
10505 NORTH COLLEGE AVENUE  
INDIANAPOLIS, INDIANA 46280  
(317) 846-6611

CIVIL ENGINEERS LAND SURVEYORS LAND PLANNERS

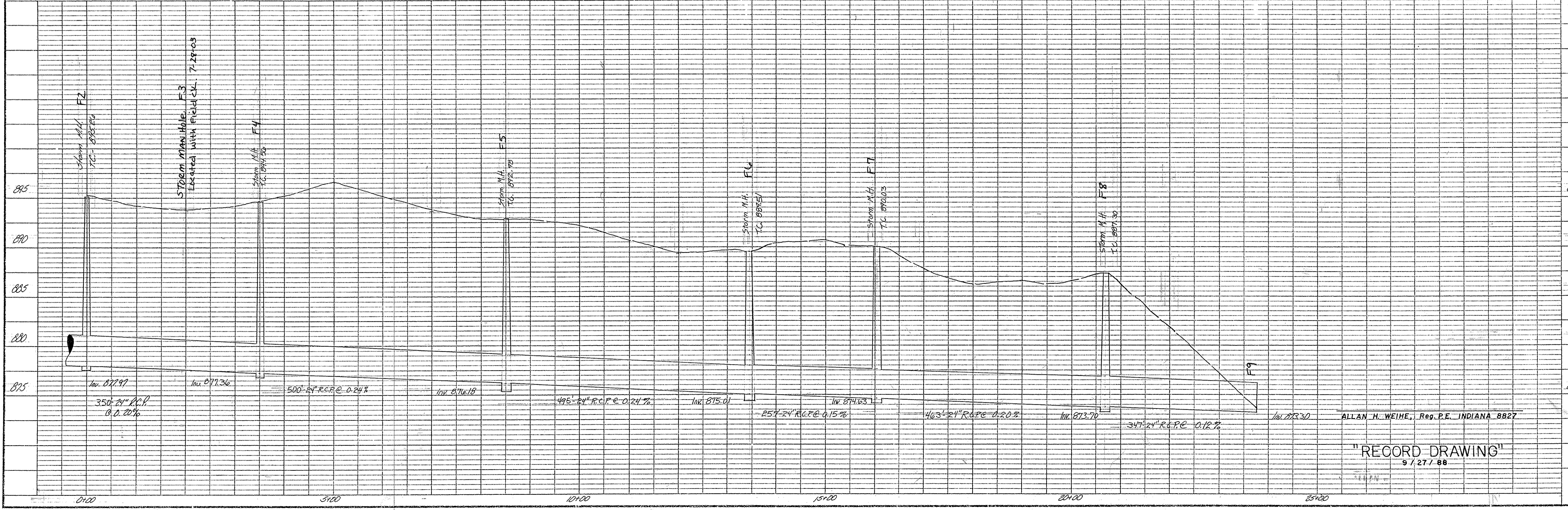
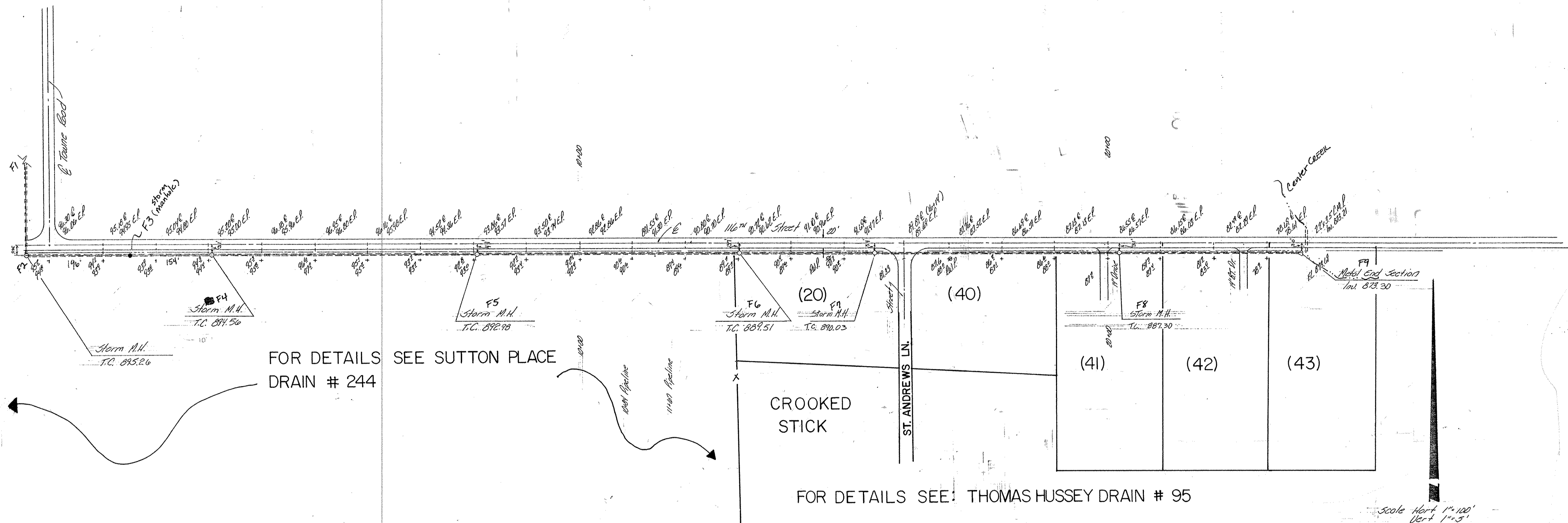
DATE BY	12/10/03	DRAWN BY	JCH	CHECKED BY	[ ]
REVISIONS	General Revisions	Issue S.D. Changes	12/10/03	DATE	
F.B.	PAGE				

William Olsen, Carmel, IN.  
*Development Plan*

SHEET NO. **4**  
OF 19

This copy printed from the Digital Archive of the Hamilton County Surveyor's Office, One Hamilton Co. Square, Ste. 188, Noblesville, IN 46060





Scale Horiz 1"=100'  
Vert 1"=5'

ALLAN H. WEIHE, Reg. P.E. INDIANA 8827

"RECORD DRAWING"  
9/27/88

WEIHE ENGINEERS INC.  
10505 NORTH COLLEGE AVENUE  
INDIANAPOLIS, INDIANA 46280  
(317) 846-6611

LAND SURVEYORS  
LAND PLANNERS  
CIVIL ENGINEERS

JOB NO. 87-206  
DRAWN BY [Signature]  
CHECKED BY [Signature]  
DATE 10/16/88

DATE BY [Signature]  
DATE BY [Signature]

REVISIONS

F. B. PAGE #

Prepared For:  
Mr. William Olson  
CROSSFIELDS  
Carmel, Indiana  
Off-site Wetland Plan & Profile Sheet

SHEET NO  
**15A**  
OF 19



*Kenton C. Ward, CFM*  
Surveyor of Hamilton County  
Phone (317) 776-8495  
Fax (317) 776-9628

Suite 188  
One Hamilton County Square  
Noblesville, Indiana 46060-2230

### ***Map Correction-Field Verification***

**Drain Number:** 230

**Drain Length:** 25,472

**Drain Name:** Crossfields: Section 1 Arm

**Change + / - :** -84

**Date:** 10-09-2009

**New Length:** 25,388

**Verified By:** GRH, LMC, SLM

---

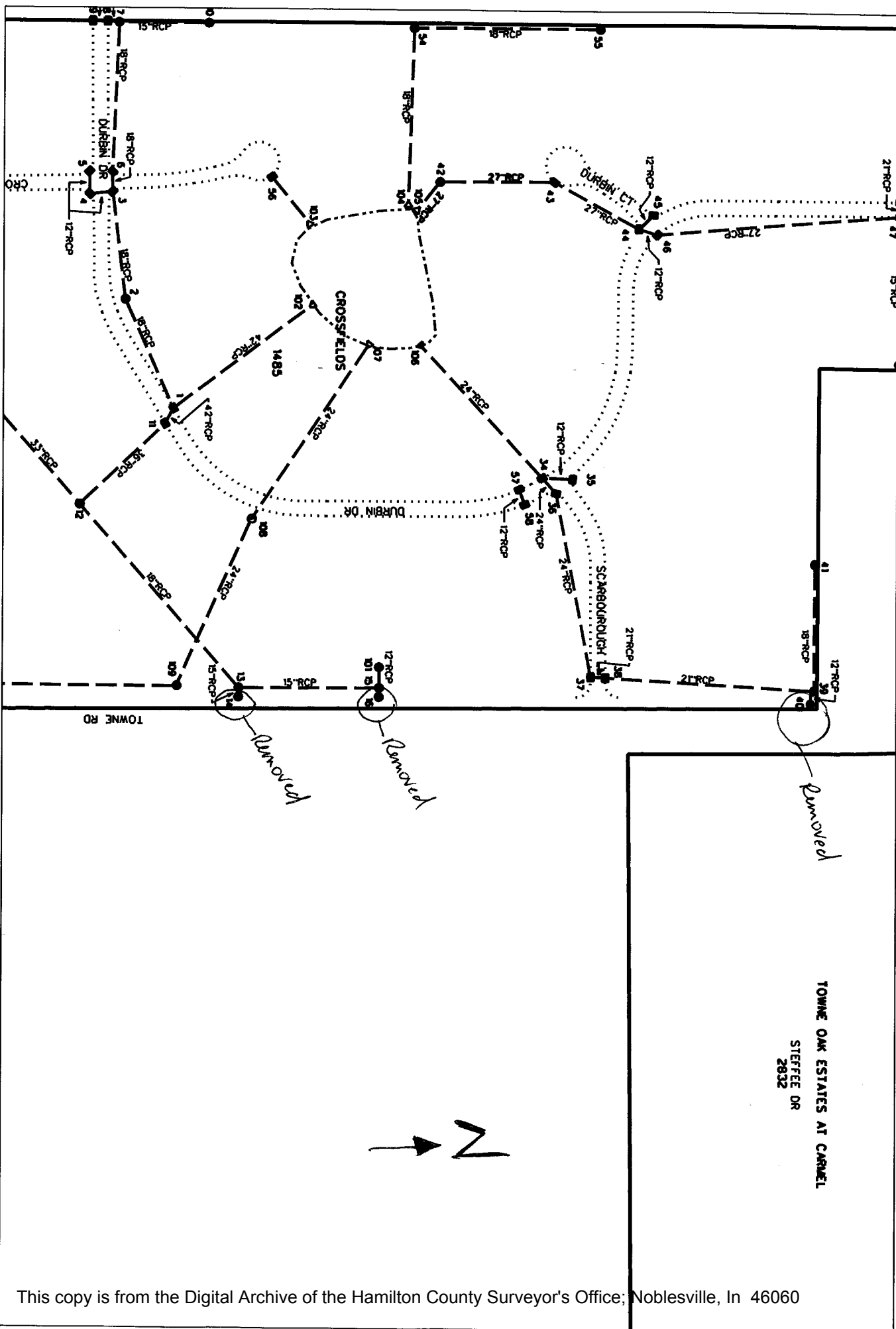
#### **Notes & Sketch:**

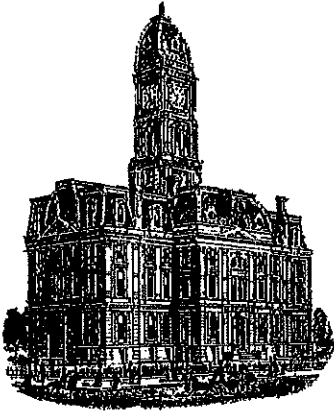
The changes listed are those done with the Towne Rd Improvements by the City of Carmel in 2007. These changes were verified by Luther Cline and Greg Hoyes of our office.

Str. 31 casting was changed from grated lid to solid lid.  
Removed pipe between Str. 33-32 consisting of 18 feet of 15" RCP.  
Str. 32 was moved north 15 feet This change removed 15 feet of 15" RCP  
Removed pipe between Str. 14-13 and consisting of 15 feet of 12" RCP.  
Removed pipe between Str. 16-15 and consisting of 16 feet of 12" RCP.  
Removed pipe between Str. 40-39 and consisting of 20 feet of 12" RCP.  
Str. 109 casting was changed from solid lid to grated lid.

Suzanne L. Mills  
GIS Specialist







*Kenton C. Ward, CFM*  
Surveyor of Hamilton County  
Phone (317) 776-8495  
Fax (317) 776-9628

Suite 188  
One Hamilton County Square  
Noblesville, Indiana 46060-2230

### *Map Correction-Field Verification*

**Drain Number:** 315

**Drain Length:** 25,388

**Drain Name:** Crossfields – Sec. 1 Arm

**Change +/- :** 119

**Date:** 12-5-2016

**New Length:** 25,507

**Verified By:** SLM

---

#### **Notes & Sketch:**

In 2004, Woolpert made a miscalculation of the 12" RCP by 51 feet, the 24" RCP by 1 foot, and did not calculate in the 65 foot of pipe between Str. 100 to Structure 28.

**Suzanne L. Mills**  
GIS Specialist